

**JAWAPAN KERTAS 2 SET 5**

1.  $x=3, y=3$  ;  $x=1, y=-1$

2. (a)

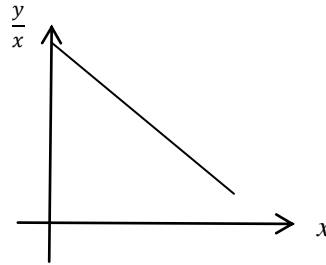
$x$	0.2	0.3	0.5	0.7	0.8	0.9
$y/x$	18.00	15.97	12.02	8.03	6.10	4.10

(b)  $\frac{y}{x} = \frac{x}{k} - 5p$

(i)  $-5p = 22 \rightarrow p = -4.4$

(ii)  $\frac{1}{k} = -20 \rightarrow k = -0.05$

(iii)  $\frac{y}{x} = 14, y = 5.6$



3. (a)  $A = 55, B = 48, C = 458.08$

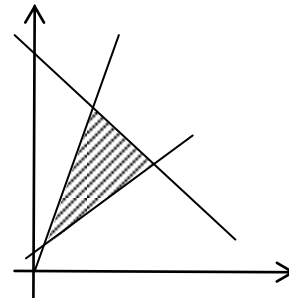
(b)  $m = 40, n = 15$

(c) 127.68

4. (a) I :  $x + y \leq 100$

II :  $y \leq 3x$

III :  $y - x \geq 10$



(c) (i) the range of the number of SPM participants is  $50 \leq y \leq 60$

(ii)  $(25, 75) \rightarrow 20(25) + 30(75) = \text{RM}2750$

5. (a)  $y = -\frac{2}{3}x - 15$

(b) (i) B (0, -2)

(ii) C (10, 13)

6. (a) (i)  $-5u + 15v$

(ii)  $4u + 3v$

(b) PT : TR = 1 : 2